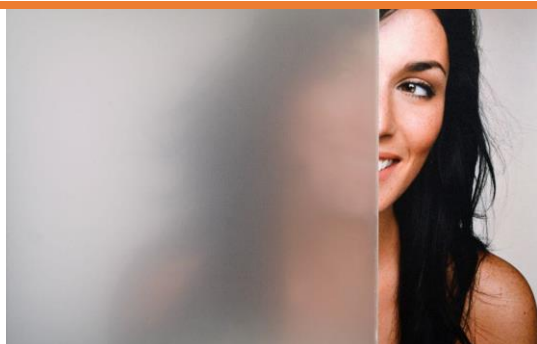


SOLYX®

SX-C300 Dusted Etch



Product Details

SX-C300 Dusted Etch film is a polyester film with a light grey, etched finish. Supplied with a silicone coated liner and pressure sensitive adhesive, it is ideal for privacy, decorative, or architectural applications.

Flammability Rating

This product meets **Class B, s1, d0**, as specified in **BS EN 13501-1:2018**.

This product meets ASTM E84 and is classified as Class A as defined in NFPA 101, Life Safety Code®.

Specification

Product Code	SX-C300
Film Type	Polyester
Adhesive Type	Pressure-sensitive
Usage	Interior
Available Roll Width(s)	60"
Thickness	50 micron
Visible Light Transmission	42%
UV Transmittance	33%
Solar Heat Transmission	7%
Infrared Transmittance	41%

Installation & Warranty

Installation

Installation should be in accordance with the manufacturer's installation instructions. This film is applied using the same methods used for installing window films.

Warranty

This product will be free from defects in material and manufacture for a period of five (5) years from the date of installation. See warranty information for specific details.

To ensure that **Genuine Solyx®** products have been installed, proof of a valid invoice number is required to validate your warranty. Scan the QR code below or visit www.glassfilms.eu/validate to validate.



Product Construction

Face Film

51 micron Polyester

Adhesive

Clear, pressure-sensitive, 17-20 micron

Release Liner

Silicone Coated

Distribution & Contact Information

Solyx® Decorative Films are available through authorised window film installers and signage companies, or directly from Glass Films.

Contact Information

Glass Films

Tel: +44 (0) 800 970 6366

Email: sales@glassfilms.eu

Web: www.glassfilms.eu