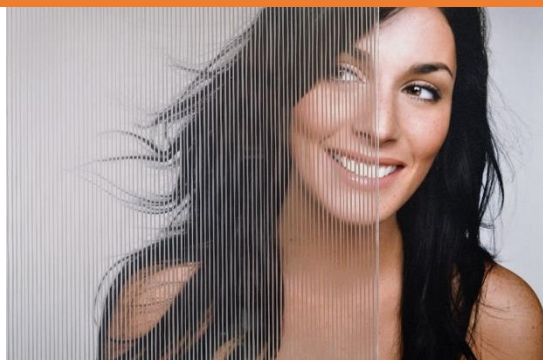


SOLYX®

SX-C361 Thin Wavy Lines



Product Details

Thin Wavy Lines. A subtle fine etched lines design providing semi-obscure. Printed on a 100% UV blocking optically clear window film.

Flammability Rating

This product meets **Class B, s1, d0**, as specified in **BS EN 13501-1:2018**.

This product meets ASTM E84 and is classified as Class A as defined in NFPA 101, Life Safety Code®.

Specification

Product Code	SX-C361
Film Type	PET
Adhesive Type	Pressure-sensitive
Usage	Interior
Available Roll Width(s)	48"
Thickness	64 micron
Visible Light Transmission	65%
UV Transmission	57%
Infra-Red Transmission	68%
Total Solar Energy Rejected	38%

Installation & Warranty

Installation

Installation should be in accordance with the manufacturer's installation instructions. This film is applied using the same methods used for installing window films.

Warranty

This product will be free from defects in material and manufacture for a period of five (5) years from the date of installation. See warranty information for specific details.

To ensure that **Genuine Solyx®** products have been installed, proof of a valid invoice number is required to validate your warranty. Scan the QR code below or visit www.glassfilms.eu/validate to validate.



Product Construction

Face Film

64 micron PET

Adhesive

Clear, Pressure-sensitive

Release Liner

Silicone Coated

Distribution & Contact Information

Solyx® Decorative Films are available through authorised window film installers and signage companies, or directly from Glass Films.

Contact Information

Glass Films

Tel: +44 (0) 800 970 6366
Email: sales@glassfilms.eu
Web: www.glassfilms.eu